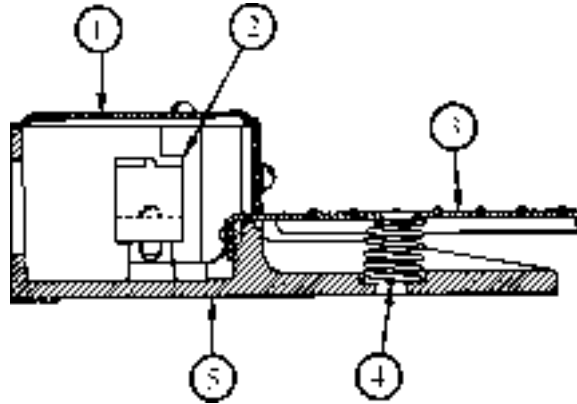


# SECTION 1025A:

## *TYPE A STANDARD DUTY TREADLE OPERATED FOOT SWITCH SERVICE BULLETIN*



**DESCRIPTION:**

This treadle-operated foot switch is provided with one single pole, double break, double throw precision switch.

No lubrication, adjustments or service care is required.

**WARNING: THIS FOOT SWITCH SHOULD ONLY BE USED WHERE POINT OF OPERATION GUARDING DEVICES HAVE BEEN PROPERLY INSTALLED SO THAT IT IS IMPOSSIBLE FOR THE OPERATOR'S HANDS OR FINGERS TO REMAIN WITHIN THE POINT OF OPERATION DURING THE ACTUAL MACHINE CYCLE.**

**RENEWAL PARTS - Information Required**

When ordering Renewal Parts, give reference to this Form No. 529, Item No., Description, Quantity, Part No. and the complete Number stamped on the label.

| ITEM NO. | DESCRIPTION OF PART        | NO. REQ. | PART NO.      |
|----------|----------------------------|----------|---------------|
| 1        | Cover .....                | 1        | SD-0316400-A  |
| 2a       | Limit Switch S.P.D.T. .... | 1        | 1950-1-B-A-DO |
| 2b       | Limit Switch D.P.D.T. .... | 1        | 1950-4-B-A-DO |
| 3        | Lever .....                | 1        | SD-0316500-A  |
| 4        | Compression Spring .....   | 1        | 04-581003     |
| 5        | Case .....                 | 1        | A-0053800-C   |
| 6        | Shield (Not Shown) .....   | 1        | C-0743800-B   |